



Post Time

at the Ratliff's II

100 head sell

We will offer 60 or more of our own as well as other top consignments from across North America.

FRIDAY, MAY 3, 2019 :: GARNETT, KANSAS



Ratliff Price ALICIA, E-95%
3-5 305 20,880 4.9% 1,014 3.6% 760
Three-time National Grand Champion

Several opportunities including her E-90% DUALY senior 3-year-old daughter fresh in December. Ron & Christy Ratliff, KS



Ratliff Minister PORSCHA-ET, E-95%
5-5 293 26,690 5.6% 1,500 3.8% 1,017
NASCO Type & Production Winner, 2015 All American Reserve Intermediate Champion, 2012 All American

Several opportunities including daughters by COLTON, APPLEJACK, EXCITATION, CITATION A and JOEL. Ron & Christy Ratliff, KS



Arethusa Primetime DEJA VU-ET, E-95%
3rd Senior 2-Year-Old, 2008 All American

Several opportunities including a VG-88% COLTON junior 3-year-old fresh by sale time. Ron & Christy Ratliff, KS



Lone Pine On Time BELIEVE, EX 94-2E
Reserve All Canadian Senior 3-Year-Old, 2014
Nominated All Canadian 5-Year-Old, 2016

Her granddaughter sells a BLACK APPLE summer yearling. The dam is a Very Good VIRTUOSO.
Moon Valley Farm Limited, MO



Avonlea latola VICTORIA, E-94%
All American Junior Two-Year-Old, 2012
1st Junior 2-Year-Old & HM Intermediate Champion
2012 World Dairy Expo

Her daughter sells!
A senior yearling due July 25 to VIP.
Ron and Christy Ratliff, KS



Discoverys Verbatim JAGUAR, E-94%
3rd National Jersey Jug Futurity, 2017
Intermediate Champion, 2017 MN State Fair

Two chances! Selling her junior 2-year-old daughter and her TEQUILA maternal sister—a fancy junior 3-year-old who will be ready for the Jug! Lisa Demmer, WI



Musque latola MARTHA-ET, E-97%
4-3 305 24,590 4.5% 1,108 3.5% 855
Supreme Champion, 2015 & 2016 Royal Winter Fair
Supreme Champion, 2016 World Dairy Expo

From her sister sired by SULTAN sells a first choice CASINO due December 2019 or VIP due January 2020. Musque Valley Farms, NS



Avonlea Premier CHOCOLATE CHIP, EX 95 CAN

1st 5-Year-Old, 2018 Royal Winter Fair and World Dairy Expo
All Canadian 5-Year-Old, 2018

Her daughter sells! A first choice VIP female due December 2019. Avonlea Genetics, ON



Duncan BELLE, EX 3E CAN

Grand Champion, 1992 & 1993 Royal Winter Fair
Jersey Journal Great Cow Contest Winner, 1998

A direct descendant sells a high genomic CRAZE at +166 GJPI.
Prairie Harbour Jerseys, MN



Ma Brown Vitality RAQUETTE, VG-88%

Backed by a VG-88% JADE then an E-90% COUNCILLER and an E-91% SPARKLER

She sells! RAQUETTE is a stunning 4-year-old. Danielle Brown, WI



Pleasant Nook Guns FOXY LADY, E-90%

Reserve Intermediate Champion, 2016 Iowa State Fair

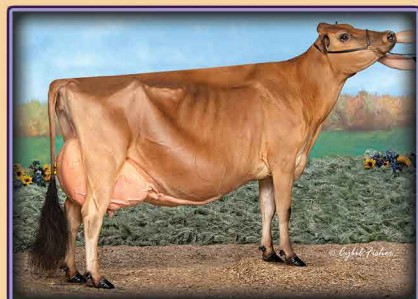
Daughter sells! A flashy TEQUILA winter calf. Blake, Mitch and Zach Schulte, IA



Lookout Reagan GLO, EX 92-2E CAN

Nominated All Canadian Junior 2-Year-Old, 2012
7th 4-Year-Old, 2014 Royal Winter Fair

Daughter sells! A flashy VICTORIOUS winter calf. Rusty Herr & Daniel Chard, NJ



DC Harmony NORMA, E-95%
4-8 305 19,100 5.0% 956 3.7% 709
Grand Champion, 2014 Mid-Atlantic Regional Show

From the same family sells a ANDREAS spring yearling backed 7 Excellent dams! Eric Evans, ID



Circlehawk Kyros RIZZO of PVF, E-94%
4-11 305 19,110 5.4% 1,031 3.8% 727

Her daughter sells a September 2018 CHROME that is +1.9 type and +27.8 GJUI. The next dam is an E-94% TBONE. Jason & Leah James, WI



Sunset Canyon Topeka ANTHEM 410-ET, E-93%

3-11 305 17,560 5.7% 1,002 3.7% 648

Her daughter sells a fresh TEQUILA senior 2-year-old.
Nathan & Rick Jensen, OR



Entourage Fireman STACEY-ET

Reserve All American Winter Yearling, 2018
2nd Winter Yearling, 2018 World Dairy Expo

Her full sister sells a senior 2-year-old fresh March 4. Their dam is an E-90% VOLTAGE daughter of Milo Vindication Season-ET, E-94%.
Matthew Senecal and Ethan Coutu, CT



Breezy Knoll Tequila TOSHA

Nominated ABA Junior All American Winter Yearling, 2018

She sells!
Fresh December 2018.
Alek and Brooke Krueger, WI

We hope to see you there May 3!

..... For more information

Location Ratliff Jersey Farm
23474 NW 1700 Rd., Garnett, KS 66032

Ron and Christy Ratliff
Ron 785/448-8200 | Christy 785/448-8201

Sale managed by
AVONLEA GENETICS INC.

Andrew and Jennifer Vander Meulen
Andrew: 613/968-1599 | Jen: 613/922-3534



**WATCH
FACEBOOK FOR
MORE DETAILS!**

- FANCY FALL CALF Sired by JOEY (Jewelene's PREMIER son). The All American Kind. Meadow Ridge Jerseys
- Another Sweetheart from Lost Elm! September 2018 TEQUILA from E-92% SULTAN dam! They know how to make them!! Lost Elm
- Big time TEQUILA Summer Yearling from E-90% Edgebrook Grand Shania. Jason Steinlage, IA
- The heifer that could stop them all!! This LADD June 2018 calf is FANCY!!! Cold Run Jerseys, OH
- Selling a VG-88 % VALENTINO. She is just fresh again and is sure to make you look twice! Kilgus Dairy, IL